



ODOS

Optical Dissolved Oxygen Sensor The Optical O₂ Sensor

Made in
Germany

With Rp 1" thread

ODOS submersible version,
applicable up to a water
depth of 50m
order-no.: 5000

Four connection options

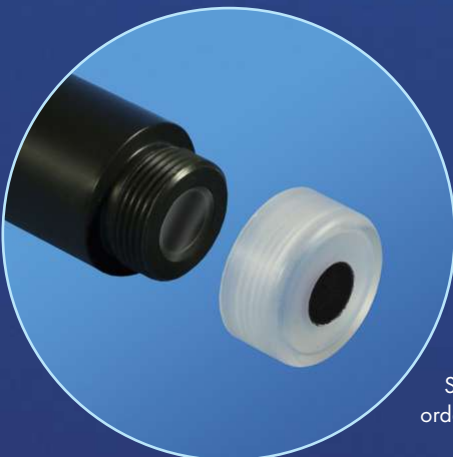
- 4-20 mA current output
- RS485 Modbus RTU-interface
- SCS Simulation Clark-Sensor (galvanic isolation)
- iks AquaStar

Your advantages

- singular calibration
- minimal operating costs
- suitable for fresh and salt water (no oxidating parts)
- quick reaction time
- no inflow necessary
- robust and easily exchangeable sensor cap
- auto malfunction diagnosis
- no additional transmitters needed
- best price-performance ratio

Application areas

- aquaculture
- lake and river monitoring
- fish farming (fresh and seawater)
- water treatment (control of the O₂-loading in activated-sludge tank)
- service and industrial water
- research (can be connected directly to a PC via an optional USB converter, no further devices needed)



Most easy maintenance

- robust and easily exchangeable sensor cap
- pre-calibrated, at once from factory usable sensors minimize maintenance time as well as costs.

Sensorcap
order-no.: 5005



ODOS

Optical Dissolved Oxygen Sensor

Installation

By the integrated 4-20mA current interface in 2-wire technology or the digital Modbus RTU-interface ODOS can be connected directly with an SPS or a process control system.

By the integrated SCS interface ODOS is downward compatible towards classical sensors with electrolyte solution. Thus existing plants can be equipped by most modern optical measurement technology without any problems.

Model range

Especially for fish farming and aquaculture we have developed a particularly robust submersible version (s. front page) including a biting protection. This version can be used up to a water depth of 50m. Furthermore the sensor can be delivered with an IP68 connector plug or with fixed cable in different lengths.

For mounting into a probe holder the sensor can be delivered optionally with a 1" process connector.

With our mounting set (order-no. 1682) the sensor (models 5000, 5001 and 5002) can be mounted into the ODOS probe holder.

Technical data

Measuring range:	0 - 20 mg/l 0 - 200 % Sat Higher measuring ranges on request
Accuracy (at 25°C):	+/- 1 %
Quantification limit:	0,1 %
Reaction time (t90):	< 60 sec.
Pressure:	max. 2 bar
Temperature range:	-5 to +50°C
Temperature compensation:	automatic
auto malfunction diagnosis:	in case of sensor cap malfunction
Probe diameter:	20 mm 30 mm with submersible version
Process connection:	optionally with 1" thread
Material:	PVC



Gefördert durch:
Bundesministerium
für Wirtschaft
und Energie
aufgrund eines Beschlusses
des Deutschen Bundestages

**Made in
Germany**

iks-industrial.com



iks ComputerSysteme GmbH
Friedrich-Speidel-Strasse 36
D-76307 Karlsbad (Germany)
Tel: +49 (0) 7202 / 94 11 40
Fax: +49 (0) 7202 / 94 11 41
e-Mail: info@iks-aqua.com